

Research Article

Unraveling the Lipolytic Activity of Thermophilic Bacteria Isolated from a Volcanic Environment

**Panagiota M. Stathopoulou, Alexander L. Savvides,
Amalia D. Karagouni, and Dimitris G. Hatzinikolaou**

Microbiology Group, Sector of Botany, Department of Biology, National and Kapodistrian University of Athens, Zografou Campus, Zografou 15784, Attica, Greece

Correspondence should be addressed to Dimitris G. Hatzinikolaou; dhatzini@biol.uoa.gr

Received 9 February 2013; Accepted 25 March 2013

Academic Editor: George Tsiamis

Copyright © 2013 Panagiota M. Stathopoulou et al. This is an open access article distributed under the Creative Commons Attribution License, which permits unrestricted use, distribution, and reproduction in any medium, provided the original work is properly cited.

In a bioprospecting effort towards novel thermostable lipases, we assessed the lipolytic profile of 101 bacterial strains isolated from the volcanic area of Santorini, Aegean Sea, Greece. Screening of lipase activity was performed both in agar plates and liquid cultures using olive oil as carbon source. Significant differences were observed between the two screening methods with no clear correlation between them. While the percentage of lipase producing strains identified in agar plates was only 17%, lipolytic activity in liquid culture supernatants was detected for 74% of them. Nine strains exhibiting elevated extracellular lipase activities were selected for lipase production and biochemical characterization. The majority of lipase producers revealed high phylogenetic similarity with *Geobacillus* species and related genera, whilst one of them was identified as *Aneurinibacillus* sp. Lipase biosynthesis strongly depended on the carbon source that supplemented the culture medium. Olive oil induced lipase production in all strains, but maximum enzyme yields for some of the strains were also obtained with Tween-80, mineral oil, and glycerol. Partially purified lipases revealed optimal activity at 70–80°C and pH 8–9. Extensive thermal stability studies revealed marked thermostability for the majority of the lipases as well as a two-step thermal deactivation pattern.

1. Introduction

Thermophilic microorganisms unequivocally represent a valuable source of highly thermostable enzymes, with numerous advantages towards biotechnological applications due to their overall inherent stability and high reaction rates at elevated temperatures [1, 2]. Among them, lipases (EC 3.1.1.3), the enzymes that catalyze both the synthesis and hydrolysis of long chain fatty acid esters (depending on water availability), constitute one of the most versatile and widely used biocatalytical group [3]. They are used in numerous diverse biotechnological applications ranging from biodiesel and biopolymers production to the synthesis of fine chemicals for medical, agrochemical, and cosmetic applications [3–5]. Due to this fact, novel thermostable lipases are in continuous demand for commercial applications especially in detergent, food, and pulp and paper industries [6]. As a result, several thermophilic microbial strains able to produce thermostable lipases have been isolated [7] and the corresponding

enzymes have been purified either from the wild-type culture supernatants [8–10] or following cloning and expression in mesophilic hosts [11–14].

Volcanic areas represent ecological niches of rich metabolic diversity especially among bacteria and archaea [15–17], and the isolation of several thermophilic microorganisms has been described from such natural sources. The vast majority of these studies, though, is focused on the phylogenetic diversity of the corresponding microbial communities, and only few reports are available in the literature assessing the enzymatic potential of the microbial strains isolated either from volcanic [18] or other extreme environments [19] with culture dependent or metagenomic approaches.

Pursuant to the above mentioned statements, screening of thermophilic microorganisms for lipolytic activities could facilitate the discovery, for industrial purposes, of novel lipases that are stable and function optimally at high temperatures. In this work, we examined the enzymatic lipolytic potential of 101 bacterial strains which had

previously been isolated from the volcanic habitat of the Santorini volcano, at South Aegean Sea [20]. A thorough biochemical screening for extracellular lipase activity was performed both in solid and liquid media in an attempt to establish benchmark criteria for such an analysis. The most active strains were selected and characterized with respect to their 16S rDNA sequences and the effect of various carbon sources on the production of extracellular lipolytic activity. Finally, the pH and temperature-activity optima as well as the corresponding thermal stability kinetics were determined for the partially purified and concentrated lipases from all selected isolates.

2. Materials and Methods

2.1. Microbial Strains. The 101 thermophilic bacterial strains used in this study have been previously isolated from the seawater and sediment near the active volcano of Santorini island at Aegean Sea, Greece [20]. All isolates were preserved in 30% (w/v) sterile glycerol solution at -80°C .

2.2. Growth Media and Conditions. All isolates were preliminary screened for their lipolytic activity both in solid and liquid cultures. A standard inoculum was prepared for each strain from glycerol stocks on Nutrient Agar (Nutrient broth plus 3% w/v agar) plates. Following incubation for 24 h at 60°C , bacterial biomass collected in sterile water and diluted to an OD_{600} of 0.3 was served as inoculum.

Solid cultures were conducted in sterile 12-well plates filled with Rhodamine B—Olive Oil agar medium containing $10\text{ g}\cdot\text{L}^{-1}$ olive oil (ROA) [8]. Twenty μL of standard inoculum was placed in the middle of each well (3 wells per strain), and the plates were incubated at 60°C up to 48 hours. Lipase production was evaluated from the diameter of the orange fluorescent halo (reaction of liberated fatty acids with Rhodamine B) observed under UV exposure [21].

Liquid cultures were conducted in 100 mL Erlenmeyer flasks with 20 mL working volume. The basal medium used consisted of ($\text{g}\cdot\text{L}^{-1}$): NaNO_3 , 3; K_2HPO_4 , 1; KCl, 0.5; CaCl_2 , 0.1; $\text{MgSO}_4\cdot 7\text{H}_2\text{O}$, 0.5; yeast extract, 1; trace elements solution, $1\text{ mL}\cdot\text{L}^{-1}$, supplemented with $20\text{ g}\cdot\text{L}^{-1}$ olive oil as sole carbon and energy source. Triplicate flasks were inoculated for each strain, with 0.5 mL standard inoculum, and all flasks were incubated in a thermostated orbital shaker (SANYO Biomedical, UK) at 60°C and 180 rpm. Evaporation was daily checked gravimetrically and compensated with the addition of sterile water. Samples were collected every 24 h for the determination of biomass concentration and extracellular lipolytic activity. The effect of other carbon sources on lipase production was determined in a similar manner, by substituting olive oil with either glucose, mineral oil, corn cob, wheat bran, eicosane, Tween-80, or glycerol at an initial concentration of $20\text{ g}\cdot\text{L}^{-1}$. Lipase production was followed by assaying of the lipase activity in the supernatant as described in enzyme assays. All lipolytic activities were determined in triplicate and reported as averages.

2.3. Molecular Characterization of Isolates. Bacterial identification of the nine selected isolates was based on 16S rDNA sequence analysis. Genomic DNA extraction from liquid cultures was performed according to Haught et al. [22], and the quantity of the isolated DNA was determined photometrically [23]. The 16S rDNA was amplified by polymerase chain reaction (PCR) using two universal primers [24, 25]:

pA (5'-AGA GTT TGA TCC TGG CTC AG-3') and
RI492 (5'-TAC GGY TAC CTT GTT ACG ACT T-3').

Amplification reactions were performed in volumes of 50 μL containing 40 ng template DNA, 0.4 μM of each primer, 1X buffer with Mg^{2+} , 1U KAPA Taq DNA polymerase (Kapa Biosystems, Woburn, MA, USA), and 0.2 mM dNTPs. Nucleases free water was used to bring the reaction volume to 50 μL . After initial denaturation at 95°C for 2 min, samples were cycled for 30 PCR cycles using the following cycle profile: 95°C denaturation for 30 s, primer annealing at 53°C for 30 s, and primer extension at 72°C for 2 min, plus a final 2 min elongation step at 72°C . Amplified PCR products were separated by gel electrophoresis on 1.2% (w/v) agarose gel and then purified using NucleoSpin Extract PCR kit (MACHEREY-NAGEL, Germany). The 16S rDNA fragment ($>1400\text{ bp}$) was fully sequenced in both directions (Macrogen, Republic of Korea). and the corresponding gene sequences have been submitted to the GenBank databases under accession numbers: JQ808132 to JQ808140 (<http://www.ncbi.nlm.nih.gov/>). The 16S sequences were used for the determination of the evolutionary history (phylogenetic tree) of the nine isolates using the Neighbor-Joining method [26] in MEGA5 software [27]. The percentage of replicate trees in which the associated taxa clustered together was calculated by the bootstrap test (1000 replicates) [28]. Evolutionary distances were computed using the Maximum Composite Likelihood method [29].

2.4. Preparation of Partially Purified Lipase Samples. Liquid cultures of the nine selected strains were conducted in 2 L Erlenmeyer flasks of 400 mL working volume (3 flasks per strain) as described above. Biomass was removed by centrifugation (6000 rpm, 5 min), and the resulting supernatant was passed through Whatman number 1 filter paper in order to remove the residual olive oil. The filtrate was then subjected to ammonium sulphate precipitation. Optimum precipitation range was determined by employing a gradual ammonium sulphate procedure (5% saturation step) and measuring specific lipase activity on the resulting supernatants and precipitates. The optimum precipitation conditions were subsequently applied to each culture supernatant and the collected precipitates were resuspended in 20 mM potassium phosphate buffer (pH 8) and desalted using PD-10 gel filtration columns (GE Healthcare) using the above buffer for elution. The concentrated and desalted enzyme solutions were used for the determination of the optimum pH and temperature and thermal stability of the corresponding lipolytic activities.

TABLE 1: Comparison of the lipolytic activities among the 101 thermophilic bacterial isolates in Rhodamine olive oil agar (ROA) and olive oil liquid (OLM) cultures.

Strain	ROA		OLM	
	24 h	48 h	48 h	72 h
SP1	-	-	-	-
SP2	-	-	0.040	0.063
SP3	-	-	-	-
SP4	-	+	0.062	0.102
SP5	-	-	-	-
SP6	+	+	0.058	0.073
SP7	-	-	0.250	0.085
SP8	-	-	0.250	0.270
SP9	-	-	0.307	0.167
SP10	-	-	0.500	0.200
SP11	-	-	0.358	0.217
SP12	-	-	0.350	0.142
SP13	-	-	0.583	0.175
SP14	-	-	1.070	2.367
SP15	-	-	0.108	0.147
SP16	-	-	0.022	0.065
SP17	-	-	-	-
SP18	-	-	0.200	0.067
SP19	-	-	0.217	0.248
SP20	-	-	0.153	0.055
SP21	-	-	0.550	0.427
SP22	-	-	1.618	0.450
SP23	-	-	0.567	0.192
SP24	-	-	0.217	0.133
SP25	-	+	0.044	0.092
SP26	-	-	-	-
SP27	+	+	0.150	0.288
SP28	-	-	-	-
SP29	-	-	0.967	0.620
SP30	-	+	0.422	1.027
SP31	-	-	-	-
SP32	-	+	0.011	0.085
SP33	-	-	-	-
SP34	-	-	-	-
SP35	-	-	0.095	0.258
SP36	-	-	-	-
SP37	-	-	-	-
SP38	-	-	0.178	0.767
SP39	-	-	-	-
SP40	-	-	0.063	0.115
SP41	-	-	-	-
SP42	-	-	0.450	0.192
SP43	-	-	0.120	0.072
SP44	-	-	0.120	0.123
SP45	-	-	0.153	0.088
SP46	-	-	-	-
SP47	-	-	0.038	0.045

TABLE 1: Continued.

Strain	ROA		OLM	
	24 h	48 h	48 h	72 h
SP48	-	-	0.043	0.027
SP49	-	-	0.033	0.032
SP50	-	-	0.042	0.037
SP51	-	-	0.058	0.032
SP52	-	-	-	-
SP53	-	-	-	-
SP54	-	-	0.037	0.045
SP55	-	-	0.035	0.062
SP56	-	-	0.052	0.000
SP57	-	-	0.038	0.183
SP58	-	-	-	-
SP59	-	-	0.000	0.085
SP60	-	-	-	-
SP61	-	-	0.040	0.037
SP62	-	-	-	-
SP63	-	-	0.038	0.053
SP64	-	-	0.057	0.000
SP65	-	-	0.045	0.043
SP66	-	-	0.115	0.047
SP67	-	-	0.053	0.075
SP68	-	-	-	-
SP69	-	-	-	-
SP70	-	-	0.043	0.070
SP71	+	+	0.043	0.052
SP72	-	-	0.208	0.244
SP73	+	++	1.083	0.740
SP74	-	-	0.088	0.000
SP75	+	++	1.540	1.667
SP76	-	-	1.297	1.317
SP77	-	-	0.483	0.228
SP78	-	-	0.220	0.150
SP79	-	-	1.167	1.245
SP80	+	+	0.137	0.110
SP81	-	-	0.543	0.293
SP82	-	+	0.235	0.250
SP83	+	+	0.625	1.433
SP84	-	+	0.167	0.133
SP85	-	-	0.077	0.000
SP86	-	-	0.063	0.070
SP87	-	+	0.058	0.000
SP88	-	-	-	-
SP89	-	-	-	-
SP90	-	+	0.593	0.233
SP91	-	-	0.517	0.767
SP92	+	+	0.517	0.522
SP93	++	++	0.610	0.633
SP94	-	-	0.550	0.257
SP95	-	-	1.027	0.600
SP96	-	-	0.073	0.085

TABLE 1: Continued.

Strain	ROA		OLM	
	24 h	48 h	48 h	72 h
SP97	–	–	–	–
SP98	–	–	–	–
SP99	–	–	–	–
SP100	–	–	0.400	0.642
SP101	–	–	0.000	0.122

In ROA cultures, qualitative evaluation was performed based on fluorescence halo production (–: no halo; +: partial coverage of the plate; ++: full coverage of the plate). In OLM cultures, values represent the extracellular lipolytic activity in nkat·mL⁻¹ (average of triplicate flasks: max. SD ± 9.4%). Bold/italicized lines represent those strains selected for further study.

2.5. Enzyme Assays. Lipase activity assays in liquid samples were routinely performed using p-nitro phenyl palmitate (pNPP) as substrate in 50 mM Tris-HCl buffer, pH 8, essentially as described by Vorderwülbecke et al. [30] with minor modifications. pNPP was dissolved in propane-2-ol at a final concentration of 7.5 mg·mL⁻¹. The final substrate solution (950 μ L) was prepared by dropwise addition, under continuous vortexing, of 95 μ L pNPP solution into 855 μ L of buffer solution (prepared by dissolving 0.4 g of Triton X-100 and 0.1 g gum arabic in 90 mL of buffer). The reaction was initiated by adding 50 μ L sample into the above substrate solution followed by incubation in a water bath at 60°C for 15 min. The reaction was terminated by placing the reaction mixture on ice for 10 min. p-nitro phenol (pNP) concentration was determined by measuring the absorbance at 410 nm using a calibration curve constructed at the assay buffer (pH 8). For blank, we used heat sterilized (15 min, 121°C) samples undergone the same procedure. Activity was expressed as nkat·mL⁻¹.

2.6. Determination of Lipase Thermal Stability and Activity Optima. Optimum temperature for lipase activity was determined under the above described assay conditions at pH 8, using an incubation temperature range from 50 to 100°C. Optimum pH values were determined in the same manner at 60°C using an assay buffer range from 6 to 10. A different calibration curve was constructed and used for pNP at each pH value used. For temperature stability, enzyme samples were incubated in sealed screw-cap vials, at pH 7 (phosphate buffer, 100 mM) at various temperatures, sample aliquots were withdrawn periodically, and remaining activity was determined at regular assay conditions. All enzyme activities were determined in triplicate and reported as averages.

3. Results and Discussion

3.1. Detection of Lipolytic Activity. The lipolytic activities of all isolates were assessed both qualitatively (agar plate cultures) and quantitatively (liquid cultures) using olive oil as sole carbon and energy source. The corresponding results are summarized in Table 1. Only 17 out of 101 (16.8%) strains produced clear fluorescent halos, designating free fatty acid release, during growth on ROA plates. On the contrary, in liquid cultures

significant lipolytic activity (>0.05 nkat/mL) was detected in the culture supernatant of 56 strains (55.4%) while for 19 strains (18.9%) the corresponding average activities were very low (<0.05 nkat/mL) but detectable. For 26 strains (25.7%) no activity was detected. No clear correlation could be identified among the two screening methods used. As a result strains such as SP6 and SP71 yielded clear fluorescent halos during growth on plates while the same strains produced only low levels of lipase in liquid cultures; in addition strains like SP14, SP22, SP29, SP76, and SP79 revealed the opposite lipolytic phenotype (no halo on ROA, high extracellular lipolytic activity in OLM). Only four out of the 101 strains, namely, SP73, SP75, SP83, and SP93, revealed an equivalent lipolytic profile both on solid and liquid cultures. In addition, we could not describe a single strain yielding fluorescence halos on Rhodamine B agar plates without displaying even a small amount of extracellular lipolytic activity in liquid cultures.

The Rhodamine B plate assay has been widely used in the past by many researchers as the sole screening method for the identification of lipase producing microorganisms from various environmental samples [31], including extreme environments such as hot springs and soda lakes [32–34]. Our results clearly demonstrate the fact that the solid-phase Rhodamine system has failed to detect all the lipase producing microorganisms even though olive oil (a true lipase inducer) was employed as sole carbon and energy source. Liquid cultures on olive oil combined with an extracellular enzyme assay proved more reliable in identifying the lipolytic potential of the strains under consideration. The lower sensitivity of Rhodamine assay that is sometimes used to explain the discrepancy between the two approaches can be easily overruled in our case, by the fact that we were able to identify strains that yielded very clear halos with only traces of lipase activity in liquid cultures. These results clearly show that liquid culture screening on various lipase inducers yields more reliable results and should be preferred, especially today, where several high throughput liquid enzymatic assay screening methods are being available [35, 36].

3.2. Phylogeny of Lipase Producers. Following the results of this primary screening, we decided to proceed with our work by selecting those strains that either excreted high average extracellular lipolytic activity in liquid cultures (>0.75 nkat·mL⁻¹) or produced intense fluorescent halos in Rhodamine media. The nine strains that fulfill these criteria are in bold italics in Table 1. The selected strains were subjected to 16S rDNA sequencing (NCBI Accession numbers: JQ808132 to JQ808140) and phylogenetic analysis. A phylogenetic tree constructed using the corresponding sequences along with those from annotated *Geobacillus* and other related genera is given in Figure 1. All nine lipolytic strains revealed great phylogenetic similarity (>99%) with known *Geobacillus* and other closely related species. This high 16S rDNA similarity is characteristic of this relatively recently characterized genus [37] that includes species with promising biotechnological potential [38]. Members of *geobacilli* have been reported to represent the majority of the species that inhabit a variety of diverse “hot” environments such as

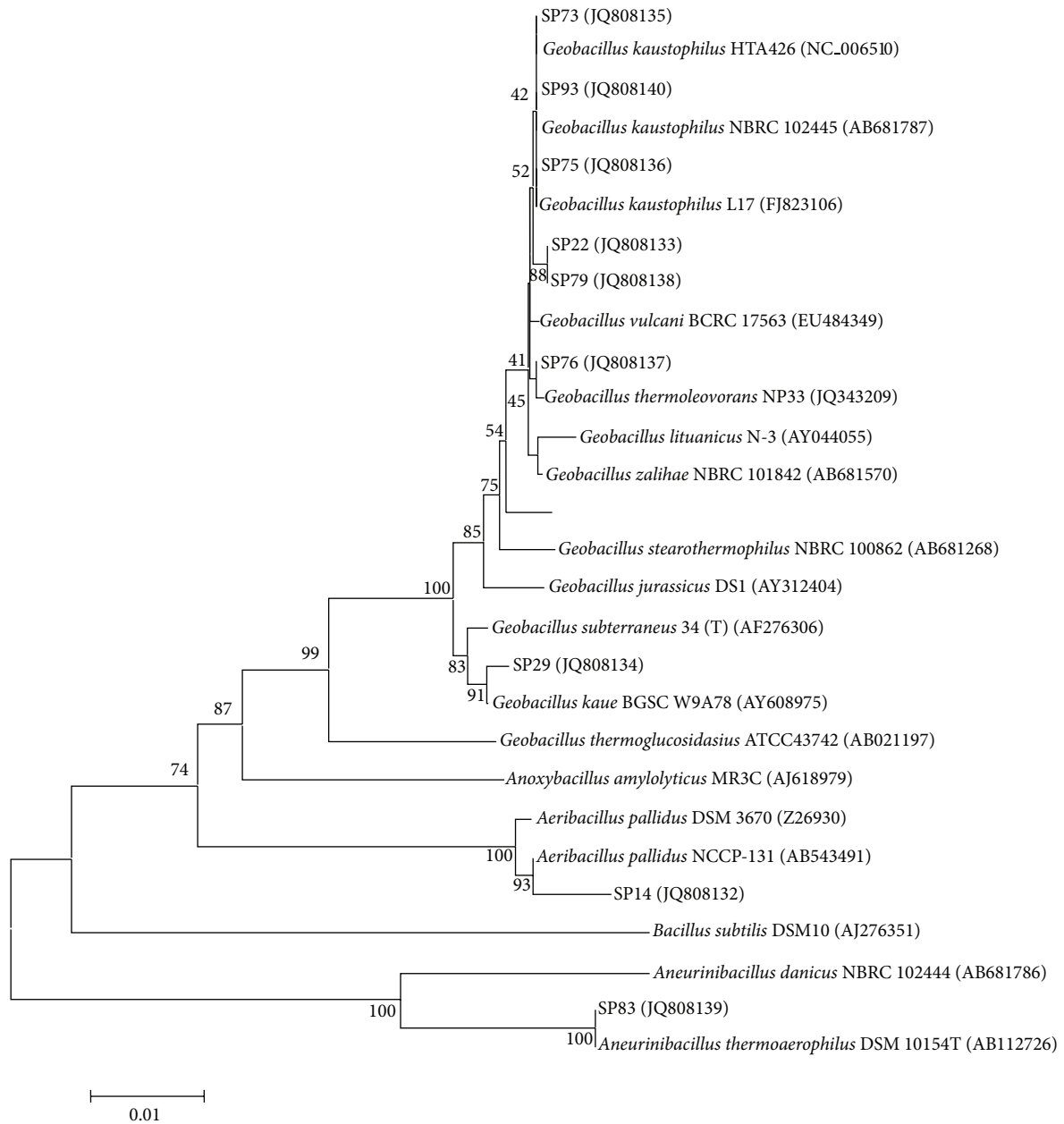


FIGURE 1: Evolutionary relationships of the selected strains using the Neighbor-Joining method. The bootstrap consensus tree was inferred from 1000 replicates. Branches corresponding to partitions reproduced in less than 50% bootstrap replicates are collapsed. The percentage of replicate trees in which the associated taxa clustered together in the bootstrap test (1000 replicates) is shown next to the branches. The tree is drawn to scale, with branch lengths in the same units as those of the evolutionary distances used to infer the phylogenetic tree. The evolutionary distances were computed using the Maximum Composite Likelihood method and are in the units of the number of base substitutions per site. All positions containing gaps and missing data were eliminated.

marine thermal vents [39, 40], high temperature oil fields [37], hot springs [41], geothermal regions [42], and sugar refinery wastewaters [43].

In our case, three of the strains, namely, SP73, SP75, and SP93 have been clustered together with known *Geobacillus kaustophilus* strains most probably representing strains of this species. To our knowledge there are no published reports on lipolytic activities from *G. kaustophilus* related strains

although it was possible to identify a provisional putative lipase gene in the *G. kaustophilus* HTA426 complete genome sequence (NCBI Accession number NC_006510, Gene ID: 3185865). Isolates SP22 and SP79 that revealed identical 16S rDNA partial sequences clustered together with close phylogenetic similarity to the *G. kaustophilus* group, while isolates SP76 and SP29 can clearly be characterized as members of the *Geobacillus* group closely related to *G. thermoleovorans*

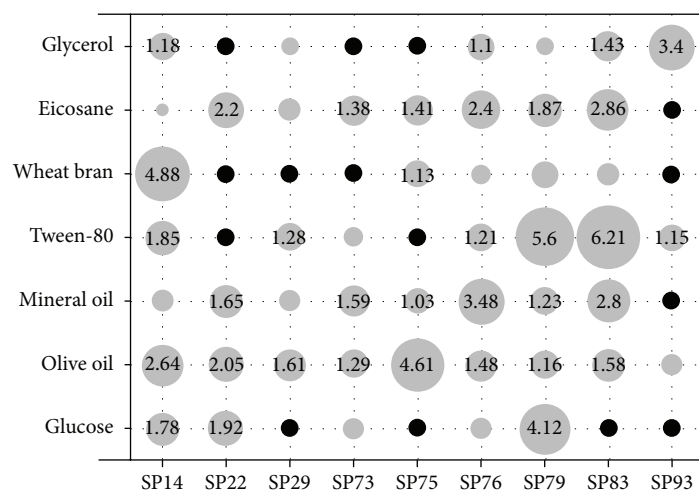


FIGURE 2: Effect of carbon source type on maximum extracellular lipase production ($\text{nkat}\cdot\text{mL}^{-1}$) in liquid cultures, achieved between 48 and 72 h of growth, depending on the source used. Circle areas are proportional to enzyme activities, while only activities above $1 \text{ nkat}\cdot\text{mL}^{-1}$ are shown with numerical values. Black circles denote no detection of lipolytic activity. Values represent the mean of triplicate flasks. Maximum $\text{SD} \pm 18.2\%$.

and *G. kaue*, respectively. *G. thermoleovorans* is a known lipase producer among the geobacilli, and the corresponding enzymes from various strains of this species have been purified and characterized either from wild-type cultures [9, 44] or following heterologous expression in *E. coli* [12, 45, 46]. On the contrary, there is no information in the literature concerning lipolytic activity by *G. kaue* strains. Isolate SP14 clustered together with the recently characterized *Aeribacillus pallidus* species, the only characterized member in the *Aeribacillus* taxonomic group [47]. Concerning lipase production, only an *A. pallidus* strain isolated from thermal sites in Mexico, has been reported to express lipolytic activity in ROA plates [48], although this was not the case for strain SP14 that showed high extracellular lipase activity only in liquid cultures. Finally, strain SP83 revealed an identical 16S rDNA sequence with *Aneurinibacillus thermoaerophilus* DSM 10154, representing the most phylogenetically distant member among the lipase producers in our study. The *Aneurinibacillus* genus does not belong to the Bacillaceae family (like *Geobacillus* and *Aeribacillus*), since is a member of the Paenibacillaceae family [49]. Strains related to this group have been isolated from geothermal soils throughout the globe [50, 51], while lipase production has been optimized in submerged cultures of an *A. thermoaerophilus* strain isolated from a Malaysian hot spring [52].

3.3. Lipase Production Pattern. The effect of carbon source on lipase production by the nine selected isolates was studied using the minimal basal medium supplemented with an initial concentration of $20 \text{ g}\cdot\text{L}^{-1}$ of various carbon sources. Samples were withdrawn twice a day, and the lipase activity was determined in the cell free supernatant. Growth of the microorganisms was observed in all cases as verified by either OD_{600} or cfu measurements (data not shown). Figure 2 summarizes the corresponding lipase production pattern which appeared to be quite diverse among the nine

isolates. Olive oil, a well-known lipase inducer, was able to induce significant lipase production levels in all nine strains, although it proved to be the optimal carbon source only for strain SP75. These results justify its use as the preferred carbon source in various screening studies for lipolytic activity in thermophilic bacteria [7] or in studies concerning the optimization of lipase production using wild type strains [53]. Tween-80, an oleic acid ester (Polyoxyethylene sorbitan monooleate), yielded maximum lipase titers in strains SP79 and SP83, but it completely inhibited lipase production in strains SP22 and SP75. Its addition in culture media for lipase production by members of the Bacillaceae family has often been evaluated, exhibiting either inducing [54–56] or inhibiting effect [8, 53, 57, 58]. Optimum lipase production with Tween-80 as sole carbon source has been also achieved with a *G. stearothermophilus* strain following medium optimization [59]. All but one strains were able to produce at least some lipase activity in the presence of pure alkanes (eicosane) or alkane mixtures (mineral oil) as sole carbon sources. Stimulation of lipase production by aliphatic hydrocarbons in bacteria, although documented several decades ago [60], has been reported only once for members of the Bacillaceae family [44]. It is also noteworthy that eicosane and mineral oil revealed very similar lipase production patterns among the nine strains (Figure 2), suggesting that lipase biosynthesis by alkanes in thermophilic bacteria is induced in a manner independent of their chain length.

The two low molecular weight compounds examined, glycerol and glucose, showed limited lipase induction ability with two notable exceptions of an apparent inducing effect; that of glycerol for strain SP93 and that of glucose for strain SP79. A repressing effect of glucose [55, 61] or glycerol [62] on lipase production by members of the Bacillaceae family has been reported in several studies, but this does not seem to be a universal phenomenon, since both glucose and glycerol were found to be excellent carbon sources for lipase production by the *G. stearothermophilus* strain-5 [59, 63]. Wheat bran,

a complex agricultural byproduct, was also examined on the basis of its use in several reports as an inducer of lipase activity by various fungi [64, 65], despite the fact that there are no references concerning its use as carbon source for lipase production in bacteria. Wheat bran was indeed a poor lipase inducer for the majority of the bacterial strains, but quite surprisingly it was proved to be the optimal carbon source for the *Aeribacillus* sp. strain SP14. The latter isolate was also among the three strains that were able to produce lipase in all carbon sources examined, the other two being strains SP76 and SP79.

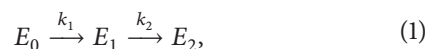
Lipase production among the nine isolates did not reveal any specific correlations with their evolutionary relationships. Phylogenetically close isolates such as SP22 and SP79 showed quite diverse lipolytic activity patterns, while the opposite was observed with several other pairs of isolates such as SP14 and SP79. The only weak relation involved the three *G. kaustophilus* strains of our study (SP73, SP75, and SP93) that proved to be the poorest lipase producers, both in substrate diversity and maximum observed lipolytic activities. It is noteworthy though to point out that the maximum lipase activities obtained in this experimental set are comparable to those reported in studies concerning the optimization of medium/culture parameters for lipase production by various thermophilic *Bacillus* and *Geobacillus* strains [53], despite the fact that we did not perform any optimization efforts.

3.4. Assessment of Lipolytic Activities. Following partial purification from the corresponding culture supernatants, we performed a biochemical characterization of the nine lipases by determining their temperature and pH-activity optima (Figure 3) as well as their thermostability kinetics (Figure 4). All lipases had a relatively basic pH optimum between 8 and 9. The functional pH range was relatively narrow between 7 and 9.5 with most of the enzymes showing a sharp decrease in the activity at pH 10. The lipases from strains SP22 and SP83 were the most alkalophilic, showing optimum activity at pH 9 and maintaining more than 30% of their activity at pH 10. These pH optima are similar to those reported for several *Bacillus* species [8, 11, 66, 67], although the pH-activity profiles for the majority of mesophilic *Bacilli* are wider, probably because pH effects are being determined at moderate temperatures between 20 and 30°C. As far as the lipases from other geobacilli are concerned, the reported pH optima are also 8 [32, 63, 68] or 9 [12, 13, 69, 70] indicating a universal lipolytic pH-activity pattern within the genus.

The temperature optima determined for the nine partially purified enzymes were relatively high and reached the level of either 70 (4 isolates) or 80°C (5 isolates). The lipases for strains SP14 (*A. pallidus*), SP22, SP73, SP79 (*G. kaustophilus*), and SP29 (*G. kaue*) had the highest temperature-activity optima maintaining (with the exception of isolate SP79) more than 80% of their optimum activity even at the temperature of 90°C. These lipolytic activity optima are significantly higher than those reported for other geobacilli. More specifically, the optimum reported activity temperatures were 55°C for the *G. stearothermophilus* JC [13] and *Geobacillus* sp. TW1 [32] lipases, 60°C for *Geobacillus* sp. SBS-4S [69]

and *G. thermoleovorans* CCR11 [12], 65°C for *Geobacillus* sp. strain ARM [68], *G. stearothermophilus* strain-5 [63], and *G. thermoleovorans* [45, 71] and 70°C for the lipase of *Geobacillus* sp. T1 [70], and *G. zalihae* [7]. These results indicate that the Santorini volcanic habitat is most probably an environment that hosts bacterial species that harbor enzymatic activities of exceptional thermophilicity.

The above promising results concerning the temperature optima of the nine partially purified lipases led us to pursue a thorough study on their thermal stability properties in 10°C increments. In agreement with their high optimum temperatures, the lipases from the Santorini geobacilli revealed very significant thermal stability properties. With the exception of the lipases from isolates SP75 and SP76 that maintained 82% and 75% of their activity, respectively, after 1 h incubation at 60°C all other lipases maintained over 90% of their activity at this temperature and incubation time (data not shown). For the temperature range from 70 to 100°C, thermal deactivation curves are given in Figure 4. Analysis of the time point data for all enzymes using SigmaPlot software revealed that first order deactivation was not able to adequately describe the deactivation kinetics of the lipases at various temperatures. In an effort to find the best fit model we applied the approach of Henley and Sadana [72] where lipase thermal inactivation is sought to take place following a two-step deactivation process, through an intermediate state, as follows:



where E_0 , E_1 , and E_2 are the specific activities of the initial, intermediate, and final state, respectively, and k_1 and k_2 are first-order deactivation constants. By defining $\alpha_1 = E_1/E_0$ and $\alpha_2 = E_2/E_0$ and assuming that the E_2 state is completely inactive ($a_2 = 0$), the observed residual enzyme activity as a function of time, α , is given by (2) following integration over time [72]:

$$\alpha = \left[1 + \frac{\alpha_1 k_1}{k_2 - k_1} \right] \cdot \exp(-k_1 t) - \left[\frac{\alpha_1 k_1}{k_2 - k_1} \right] \cdot \exp(-k_2 t). \quad (2)$$

The fitting of the experimental data into (2) for each lipase and temperature was performed using the nonlinear regression routines of SigmaPlot software, and the results are presented in Figure 4 and Table 2. Regression was allowed to converge freely into the least-squares value and the only restriction that was applied concerned the α_1 specific activity ratio that was confined between the values of 0 and 1.

All lipases seemed to follow the two-step deactivation scheme, since we observed an excellent fitting of the experimental data into (2). This means that the enzymes upon the effect of temperature undergo a relatively rapid inactivation into the E_1 intermediate form, which has lower activity compared to the native enzyme (E_0). The deactivation rate, though, from the intermediate form to the completely inactive enzyme (E_2) is significantly slower, advocating for a more compact and heat resistant character for the E_1 enzyme.

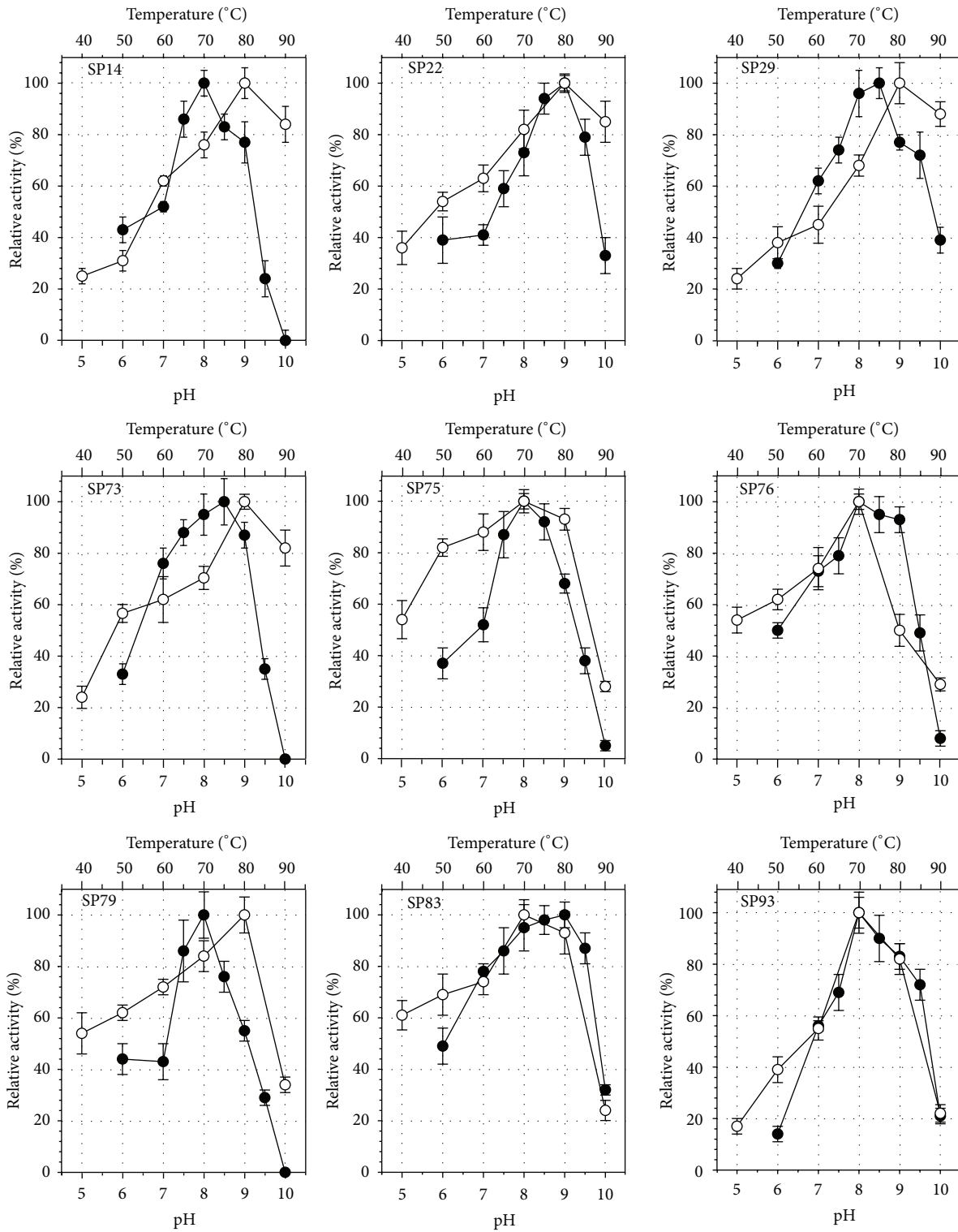


FIGURE 3: Effect of pH (●) and temperature (○) on the activity of the partially purified lipases from the nine selected strains. Error bars represent the SD from triplicate determinations.

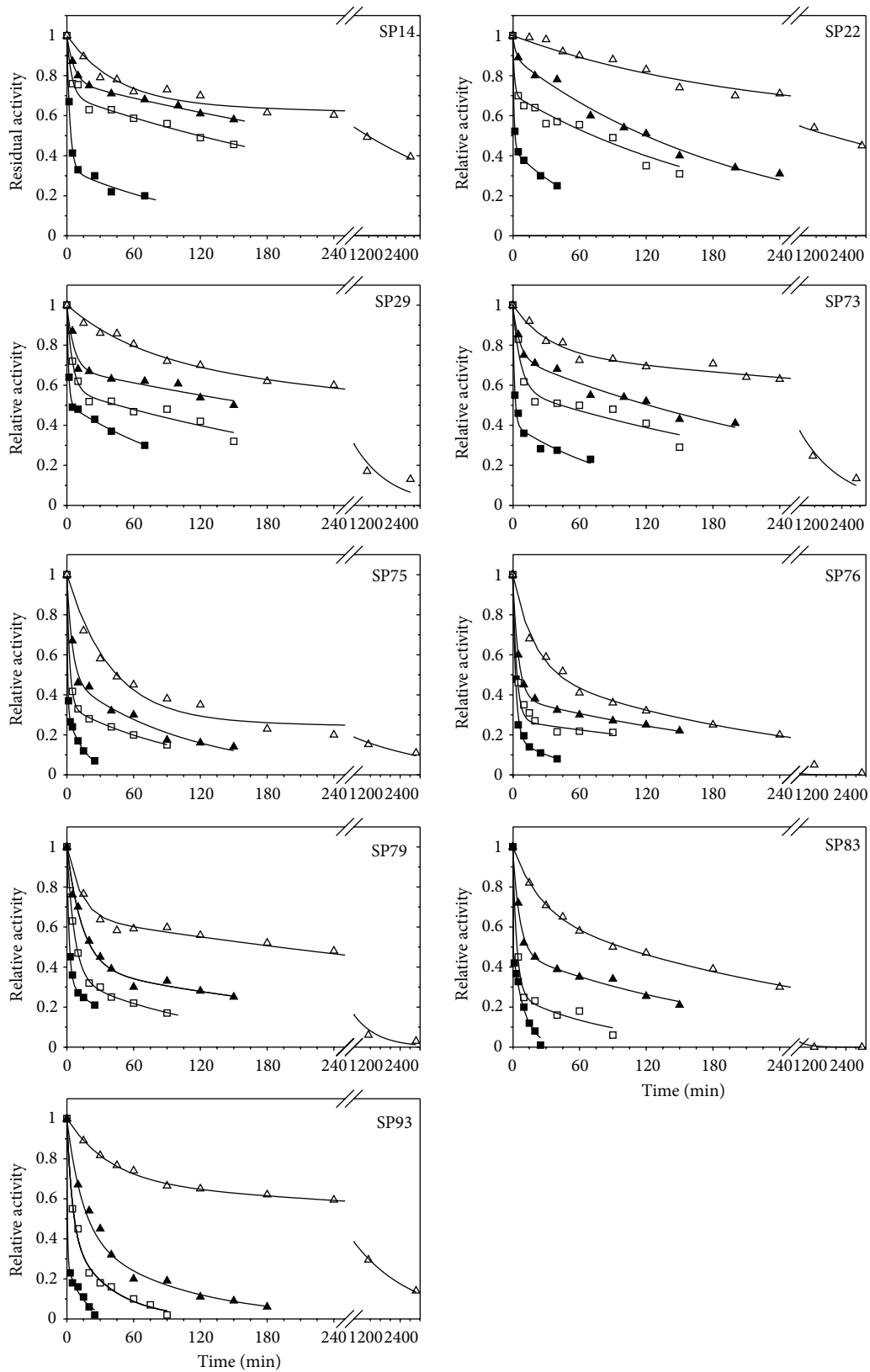


FIGURE 4: Thermal stability profiles of the nine partially purified lipases. Δ : 70°C; \blacktriangle : 80°C; \square : 90°C; \blacksquare : 100°C. Straight lines represent the non-linear fitting of (2) in the experimental data.

TABLE 2: Values of the kinetic constants for the thermal deactivation kinetics as determined through nonlinear regression fitting of the experimental data in (2). Activation energies for k_1 and k_2 were determined from the Arrhenius equation through linear regression.

		SP14	SP22	SP29	SP73	SP75
α_1	70°C	0.647 ± 0.021	0.589 ± 0.060	0.662 ± 0.055	0.740 ± 0.021	0.267 ± 0.030
	80°C	0.759 ± 0.007	0.879 ± 0.035	0.673 ± 0.040	0.726 ± 0.028	0.459 ± 0.044
	90°C	0.690 ± 0.026	0.687 ± 0.026	0.566 ± 0.031	0.562 ± 0.059	0.335 ± 0.005
	100°C	0.328 ± 0.027	0.432 ± 0.006	0.500 ± 0.011	0.399 ± 0.034	0.302 ± 0.009
k_1 (min ⁻¹)	70°C	2.24 ± 0.37 × 10 ⁻²	5.06 ± 1.14 × 10 ⁻³	1.43 ± 0.44 × 10 ⁻²	3.21 ± 0.74 × 10 ⁻²	2.54 ± 0.30 × 10 ⁻¹
	80°C	1.54 ± 0.12 × 10 ⁻¹	3.45 ± 0.36 × 10 ⁻¹	1.57 ± 0.54 × 10 ⁻¹	1.66 ± 0.47 × 10 ⁻¹	2.07 ± 0.45 × 10 ⁻¹
	90°C	2.30 ± 0.65 × 10 ⁻¹	5.33 ± 0.36 × 10 ⁻¹	2.04 ± 0.45 × 10 ⁻¹	1.45 ± 0.52 × 10 ⁻¹	3.96 ± 0.13 × 10 ⁻¹
	100°C	3.59 ± 0.40 × 10 ⁻¹	8.81 ± 0.37 × 10 ⁻¹	6.47 ± 0.54 × 10 ⁻¹	6.27 ± 1.27 × 10 ⁻¹	1.42 ± 0.08 × 10 ⁰
	E_a (kJ/mole)	93.72	171.58	125.24	93.56	60.96
k_2 (min ⁻¹)	70°C	1.82 ± 0.27 × 10 ⁻⁴	9.42 × 1.49 × 10 ⁻⁵	8.26 ± 1.13 × 10 ⁻⁴	7.06 ± 0.62 × 10 ⁻⁴	3.59 ± 1.33 × 10 ⁻⁴
	80°C	1.83 ± 0.10 × 10 ⁻³	4.85 ± 0.31 × 10 ⁻⁴	1.76 ± 0.64 × 10 ⁻³	3.21 ± 0.35 × 10 ⁻³	9.20 ± 1.48 × 10 ⁻³
	90°C	2.81 ± 0.45 × 10 ⁻³	4.96 ± 0.56 × 10 ⁻³	3.05 ± 0.66 × 10 ⁻³	3.27 ± 1.22 × 10 ⁻³	9.09 ± 0.34 × 10 ⁻³
	100°C	7.84 ± 2.32 × 10 ⁻³	1.45 ± 0.07 × 10 ⁻²	7.43 ± 0.68 × 10 ⁻³	9.42 ± 2.68 × 10 ⁻³	6.19 ± 0.32 × 10 ⁻²
	E_a (kJ/mole)	125.29	185.85	80.47	83.19	165.09
		SP76	SP79	SP83	SP93	
α_1	70°C	0.493 ± 0.055	0.639 ± 0.013	0.627 ± 0.026	0.662 ± 0.006	
	80°C	0.377 ± 0.008	0.384 ± 0.047	0.458 ± 0.029	0.380 ± 0.011	
	90°C	0.270 ± 0.048	0.330 ± 0.022	0.254 ± 0.053	0.366 ± 0.083	
	100°C	0.176 ± 0.054	0.313 ± 0.013	0.491 ± 0.052	0.271 ± 0.065	
k_1 (min ⁻¹)	70°C	5.36 ± 1.21 × 10 ⁻²	7.23 ± 1.63 × 10 ⁻²	4.12 ± 0.53 × 10 ⁻²	2.57 ± 0.12 × 10 ⁻²	
	80°C	2.02 ± 0.08 × 10 ⁻¹	8.01 ± 1.17 × 10 ⁻²	1.64 ± 0.23 × 10 ⁻¹	7.22 ± 0.23 × 10 ⁻²	
	90°C	2.90 ± 0.68 × 10 ⁻¹	1.48 ± 0.10 × 10 ⁻¹	2.77 ± 0.60 × 10 ⁻¹	2.02 ± 0.05 × 10 ⁻¹	
	100°C	3.68 ± 0.58 × 10 ⁻¹	5.05 ± 0.27 × 10 ⁻¹	1.19 ± 0.47 × 10 ¹	1.87 ± 0.46 × 10 ⁰	
	E_a (kJ/mole)	66.00	67.92	185.06	147.11	
k_2 (min ⁻¹)	70°C	3.77 ± 0.82 × 10 ⁻³	1.39 ± 0.16 × 10 ⁻³	3.30 ± 0.24 × 10 ⁻³	5.63 ± 0.13 × 10 ⁻⁴	
	80°C	4.21 ± 0.25 × 10 ⁻³	3.04 ± 0.64 × 10 ⁻³	4.88 ± 0.80 × 10 ⁻³	1.09 ± 0.03 × 10 ⁻²	
	90°C	2.06 ± 0.35 × 10 ⁻²	7.81 ± 1.43 × 10 ⁻³	1.12 ± 0.49 × 10 ⁻²	2.62 ± 0.61 × 10 ⁻²	
	100°C	3.23 ± 1.50 × 10 ⁻²	1.77 ± 0.27 × 10 ⁻²	9.49 ± 0.88 × 10 ⁻²	7.25 ± 1.50 × 10 ⁻²	
	E_a (kJ/mole)	85.26	91.24	115.04	165.59	

This was verified by the fact that for all enzymes and at all temperatures examined the values of the deactivation constant k_2 were on average two orders of magnitude lower than the corresponding k_1 levels (Table 2). With the exceptions of the lipases from isolates SP75 and SP76 above mentioned, all other enzymes showed exceptional thermal stabilities that allowed clear detection of activity even after 1 h incubation at 100°C. The most thermostable enzymes were those of strains SP14, SP22, SP29, and SP73. The most significant differentiation of these four lipases that seemed to contribute in their observed high thermal stability was the fact that the specific activity ratio α_1 for these enzymes was markedly higher than the other five lipases, and more importantly, its value was practically stable in the temperature range from 70 to 90°C. As was the case with their temperature-activity optima, the lipases from the Santorini thermophilic bacilli were also more thermostable than the majority of other *Geobacillus* sp. lipases reported in the literature. Although this is the first extensive study on the thermal stabilities for *Geobacillus* lipases, literature data fully support our claim, since complete loss of activity has been reported for the *G. zalihae* lipase

following 30 min incubation at 80°C [7], the *Geobacillus* sp. SBS-4S lipase when exposed for 100 min at 60°C [69], and the lipase from *G. stearothermophilus* JC after 30 min at 70°C [13], while the *Geobacillus* sp. strain ARM lipase had half lives of only few minutes at 60 and 70°C [68].

4. Conclusions

An extensive assessment of the lipolytic potential in a set of thermophilic bacteria isolated from the Santorini volcanic habitat was performed. By combining both solid and liquid culture techniques, a widespread lipolytic phenotype of variable intensity was revealed, that involved almost 75% of the isolates. The genus *Geobacillus* was the dominant one within the subset of nine strains selected for their high extracellular lipase production. Enzyme levels were strongly dependent on the type of carbon source, but we were not able to clearly identify a universal phenotype for lipase induction among the strains. The biochemical characterization of the nine lipases marked a significant differentiation to most other *Geobacillus*

lipases with respect to the effect of temperature on the activity and stability of the corresponding enzymes. The majority of lipases from the Santorini thermophilic bacteria revealed exceptional thermostability with high optimum activity temperatures, thus representing very promising candidate enzymes for a variety of high temperature industrial lipolytic applications. Such an endeavor would probably require their efficient cloning and overexpression in mesophilic hosts, even though that for some of the strains lipase production was at relatively high levels compared to other wild-type thermophilic bacterial strains.

Conflict of Interests

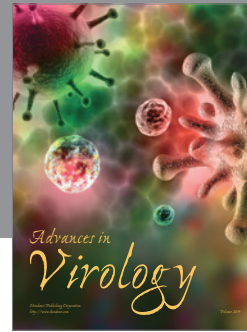
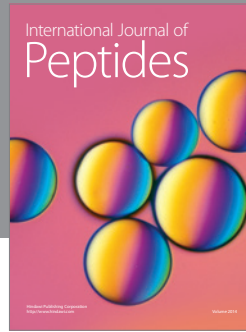
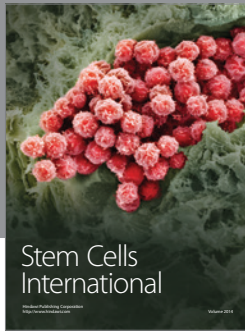
All the authors of the paper do not have a direct financial relation with any identity mentioned in the paper that might lead to a conflict of interests.

References

- [1] C. Vieille and G. J. Zeikus, "Hyperthermophilic enzymes: sources, uses, and molecular mechanisms for thermostability," *Microbiology and Molecular Biology Reviews*, vol. 65, no. 1, pp. 1–43, 2001.
- [2] P. Turner, G. Mamo, and E. N. Karlsson, "Potential and utilization of thermophiles and thermostable enzymes in biorefining," *Microbial Cell Factories*, vol. 6, p. 9, 2007.
- [3] R. Gupta, N. Gupta, and P. Rathi, "Bacterial lipases: an overview of production, purification and biochemical properties," *Applied Microbiology and Biotechnology*, vol. 64, no. 6, pp. 763–781, 2004.
- [4] K.-E. Jaeger and T. Eggert, "Lipases for biotechnology," *Current Opinion in Biotechnology*, vol. 13, no. 4, pp. 390–397, 2002.
- [5] H. Treichel, D. de Oliveira, M. A. Mazutti, M. Di Luccio, and J. V. Oliveira, "A review on microbial lipases production," *Food and Bioprocess Technology*, vol. 3, no. 2, pp. 182–196, 2010.
- [6] M. Salameh and J. Wiegel, "Lipases from extremophiles and potential for industrial applications," *Advances in Applied Microbiology*, vol. 61, pp. 253–283, 2007.
- [7] R. N. Abd Rahman, T. C. Leow, A. B. Salleh, and M. Basri, "Geobacillus zalihae sp. nov., a thermophilic lipolytic bacterium isolated from palm oil mill effluent in Malaysia," *BMC Microbiology*, vol. 7, p. 77, 2007.
- [8] C. Schmidt-Dannert, H. Sztajer, W. Stocklein, U. Menge, and R. D. Schmid, "Screening, purification and properties of a thermophilic lipase from *Bacillus thermocatenuatus*," *Biochimica et Biophysica Acta*, vol. 1214, no. 1, pp. 43–53, 1994.
- [9] L. D. Castro-Ochoa, C. Rodríguez-Gómez, G. Valerio-Alfaro, and R. Oliart Ros, "Screening, purification and characterization of the thermoalkalophilic lipase produced by *Bacillus thermoleovorans* CCR11," *Enzyme and Microbial Technology*, vol. 37, no. 6, pp. 648–654, 2005.
- [10] M. A. Salameh and J. Wiegel, "Purification and characterization of two highly thermophilic alkaline lipases from *Thermosyntrophia lipolytica*," *Applied and Environmental Microbiology*, vol. 73, no. 23, pp. 7725–7731, 2007.
- [11] S. Sinchaikul, B. Sookkheo, S. Phutrakul, F. M. Pan, and S. T. Chen, "Optimization of a thermostable lipase from *Bacillus stearothermophilus* pl: overexpression, purification, and characterization," *Protein Expression and Purification*, vol. 22, no. 3, pp. 388–398, 2001.
- [12] R. Quintana-Castro, P. Díaz, G. Valerio-Alfaro, H. S. García, and R. Oliart-Ros, "Gene cloning, expression, and characterization of the *Geobacillus thermoleovorans* CCR11 thermoalkaliphilic lipase," *Molecular Biotechnology*, vol. 42, no. 1, pp. 75–83, 2009.
- [13] Y. Jiang, X. Zhou, and Z. Chen, "Cloning, expression, and biochemical characterization of a thermostable lipase from *Geobacillus stearothermophilus* JC," *World Journal of Microbiology and Biotechnology*, vol. 26, no. 4, pp. 747–751, 2010.
- [14] T. C. Leow, R. N. Abd Rahman, M. Basri, and A. B. Salleh, "High level expression of thermostable lipase from *Geobacillus* sp. strain T1," *Bioscience, Biotechnology and Biochemistry*, vol. 68, no. 1, pp. 96–103, 2004.
- [15] R. J. Martinez, H. J. Mills, S. Story, and P. A. Sobczyk, "Prokaryotic diversity and metabolically active microbial populations in sediments from an active mud volcano in the Gulf of Mexico," *Environmental Microbiology*, vol. 8, no. 10, pp. 1783–1796, 2006.
- [16] M. G. Pachiadaki, V. Lykousis, E. G. Stefanou, and K. A. Kormas, "Prokaryotic community structure and diversity in the sediments of an active submarine mud volcano (Kazan mud volcano, East Mediterranean Sea)," *FEMS Microbiology Ecology*, vol. 72, no. 3, pp. 429–444, 2010.
- [17] M. I. Prokofeva, I. V. Kublanov, O. Nercessian et al., "Cultivated anaerobic acidophilic/acidotolerant thermophiles from terrestrial and deep-sea hydrothermal habitats," *Extremophiles*, vol. 9, no. 6, pp. 437–448, 2005.
- [18] I. V. Kublanov, A. A. Perevalova, G. B. Slobodkina et al., "Biodiversity of thermophilic prokaryotes with hydrolytic activities in hot springs of Uzon caldera, Kamchatka (Russia)," *Applied and Environmental Microbiology*, vol. 75, no. 1, pp. 286–291, 2009.
- [19] G. F. da Cruz, C. F. F. Angolini, L. G. De Oliveira et al., "Searching for monooxygenases and hydrolases in bacteria from an extreme environment," *Applied Microbiology and Biotechnology*, vol. 87, no. 1, pp. 319–329, 2010.
- [20] C. Meintanis, K. I. Chalkou, K. A. Kormas, and A. D. Karagouni, "Biodegradation of crude oil by thermophilic bacteria isolated from a volcano island," *Biodegradation*, vol. 17, no. 2, pp. 105–111, 2006.
- [21] G. Kouker and K. E. Jaeger, "Specific and sensitive plate assay for bacterial lipases," *Applied and Environmental Microbiology*, vol. 53, no. 1, pp. 211–213, 1987.
- [22] C. Hought, D. L. Wilkinson, K. Zgafas, and R. G. Harrison, "A method to insert a DNA fragment into a double-stranded plasmid," *BioTechniques*, vol. 16, no. 1, pp. 46–48, 1994.
- [23] J. Sambrook, E. F. Fritsch, and T. Maniatis, *Molecular Cloning: A Laboratory Manual*, Cold Spring Harbor Laboratory, Cold Spring Harbor, NY, USA, 1989.
- [24] U. Edwards, T. Rogall, H. Blocker, M. Emde, and E. C. Bottger, "Isolation and direct complete nucleotide determination of entire genes. Characterization of a gene coding for 16S ribosomal RNA," *Nucleic Acids Research*, vol. 17, no. 19, pp. 7843–7853, 1989.
- [25] D. J. Lane, "16S/23S rRNA Sequencing," in *Nucleic Acid Techniques in Bacterial Systematics*, E. Stackebrandt and M. Goodfellow, Eds., pp. 115–147, John Wiley & Sons, New York, NY, USA, 1991.
- [26] N. Saitou and M. Nei, "The neighbor-joining method: a new method for reconstructing phylogenetic trees," *Molecular Biology and Evolution*, vol. 4, no. 4, pp. 406–425, 1987.
- [27] K. Tamura, D. Peterson, N. Peterson et al., "MEGA5: molecular evolutionary genetics analysis using maximum likelihood, evolutionary distance, and maximum parsimony methods,"

- Molecular Biology and Evolution*, vol. 28, no. 10, pp. 2731–2739, 2011.
- [28] J. Felsenstein, “Confidence limits on phylogenies: an approach using the bootstrap,” *Evolution*, vol. 39, no. 4, pp. 783–791, 1985.
- [29] K. Tamura, M. Nei, and S. Kumar, “Prospects for inferring very large phylogenies by using the neighbor-joining method,” *Proceedings of the National Academy of Sciences of the United States of America*, vol. 101, no. 30, pp. 11030–11035, 2004.
- [30] T. Vorderwülbecke, K. Kieslich, and H. Erdmann, “Comparison of lipases by different assays,” *Enzyme and Microbial Technology*, vol. 14, no. 8, pp. 631–639, 1992.
- [31] Z. Shu, R. Lin, H. Jiang, Y. Zhang, M. Wang, and J. Huang, “A rapid and efficient method for directed screening of lipase-producing *Burkholderia cepacia* complex strains with organic solvent tolerance from rhizosphere,” *Journal of Bioscience and Bioengineering*, vol. 107, no. 6, pp. 658–661, 2009.
- [32] H. Li and X. Zhang, “Characterization of thermostable lipase from thermophilic *Geobacillus* sp. TW1,” *Protein Expression and Purification*, vol. 42, no. 1, pp. 153–159, 2005.
- [33] N. S. Abdul Hamid, H. B. Zen, O. B. Tein, Y. M. Halifah, N. Saari, and F. Abu Bakar, “Screening and identification of extracellular lipase-producing thermophilic bacteria from a Malaysian hot spring,” *World Journal of Microbiology and Biotechnology*, vol. 19, no. 9, pp. 961–968, 2003.
- [34] V. A. Vargas, O. D. Delgado, R. Hatti-Kaul, and B. Mattiasson, “Lipase-producing microorganisms from a Kenyan alkaline soda lake,” *Biotechnology Letters*, vol. 26, no. 2, pp. 81–86, 2004.
- [35] J.-L. Reymond and P. Babiak, “Screening systems,” in *White Biotechnology*, R. Ulber and D. Sell, Eds., pp. 31–58, Springer, Berlin, Germany, 2007.
- [36] D. Navarro, M. Couturier, G. G. D. da Silva et al., “Automated assay for screening the enzymatic release of reducing sugars from micronized biomass,” *Microbial Cell Factories*, vol. 9, p. 58, 2010.
- [37] T. N. Nazina, T. P. Tourova, A. B. Poltarau et al., “Taxonomic study of aerobic thermophilic bacilli: descriptions of *Geobacillus subterraneus* gen. nov., sp. nov. and *Geobacillus uzenensis* sp. nov. from petroleum reservoirs and transfer of *Bacillus stearothermophilus*, *Bacillus thermocatenulatus*, *Bacillus thermoleovorans*,” *International Journal of Systematic and Evolutionary Microbiology*, vol. 51, no. 2, pp. 433–446, 2001.
- [38] G. McMullan, J. M. Christie, T. J. Rahman, I. M. Banat, N. G. Ternan, and R. Marchant, “Habitat, applications and genomics of the aerobic, thermophilic genus *Geobacillus*,” *Biochemical Society Transactions*, vol. 32, no. 2, pp. 214–217, 2004.
- [39] T. L. Maugeri, C. Gugliandolo, D. Caccamo, and E. Stackebrandt, “A polyphasic taxonomic study of thermophilic bacilli from shallow, marine vents,” *Systematic and Applied Microbiology*, vol. 24, no. 4, pp. 572–587, 2001.
- [40] T. L. Maugeri, C. Gugliandolo, D. Caccamo, and E. Stackebrandt, “Three novel halotolerant and thermophilic *Geobacillus* strains from shallow marine vents,” *Systematic and Applied Microbiology*, vol. 25, no. 3, pp. 450–455, 2002.
- [41] S. Canakci, K. Inan, M. Kacagan, and A. O. Belduz, “Evaluation of arabinofuranosidase and xylanase activities of *Geobacillus* spp. isolated from some hot springs in Turkey,” *Journal of Microbiology and Biotechnology*, vol. 17, no. 8, pp. 1262–1270, 2007.
- [42] A. Cihan, B. Ozcan, N. Tekin et al., “Phylogenetic diversity of isolates belonging to genera *Geobacillus* and *Aeribacillus* isolated from different geothermal regions of Turkey,” *World Journal of Microbiology and Biotechnology*, vol. 27, no. 11, pp. 2683–2696, 2011.
- [43] S.-K. Tai, H.-P. Lin, J. Kuo, and J. K. Liu, “Isolation and characterization of a cellulolytic *Geobacillus thermoleovorans* T4 strain from sugar refinery wastewater,” *Extremophiles*, vol. 8, no. 5, pp. 345–349, 2004.
- [44] D.-W. Lee, Y.-S. Koh, K.-J. Kim et al., “Isolation and characterization of a thermophilic lipase from *Bacillus thermoleovorans* ID-1,” *FEMS Microbiology Letters*, vol. 179, no. 2, pp. 393–400, 1999.
- [45] Y. R. Abdel-Fattah and A. A. Gaballa, “Identification and over-expression of a thermostable lipase from *Geobacillus thermoleovorans* Toshki in *Escherichia coli*,” *Microbiological Research*, vol. 163, no. 1, pp. 13–20, 2008.
- [46] A. R. Cho, S. K. Yoo, and E. J. Kim, “Cloning, sequencing and expression in *Escherichia coli* of a thermophilic lipase from *Bacillus thermoleovorans* ID-1,” *FEMS Microbiology Letters*, vol. 186, no. 2, pp. 235–238, 2000.
- [47] D. Miñana-Galbis, D. L. Pinzón, J. G. Lorén, A. Manresa, and R. M. Oliart-Ros, “Reclassification of *Geobacillus pallidus* (Scholz et al. 1988) Banat et al. 2004 as *Aeribacillus pallidus* gen. nov., comb. nov.,” *International Journal of Systematic and Evolutionary Microbiology*, vol. 60, no. 7, pp. 1600–1604, 2010.
- [48] D. L. Pinzón-Martínez, C. Rodríguez-Gómez, D. Miñana-Galbis et al., “Thermophilic bacteria from Mexican thermal environments: isolation and potential applications,” *Environmental Technology*, vol. 31, no. 8-9, pp. 957–966, 2010.
- [49] M. Heyndrickx, L. Lebbe, M. Vancanneyt et al., “A polyphasic reassessment of the genus *Aneurinibacillus*, reclassification of *Bacillus thermoaerophilus* (Meier-Stauffner et al. 1996) as *Aneurinibacillus thermoaerophilus* comb. nov., and emended descriptions of *A. aneurinilyticus* corrig., *A. migulanus*, and *A. thermoaerophilus*,” *International Journal of Systematic Bacteriology*, vol. 47, no. 3, pp. 808–817, 1997.
- [50] R. N. Allan, L. Lebbe, J. Heyrman, P. De Vos, C. J. Buchanan, and N. A. Logan, “*Brevibacillus levickii* sp. nov. and *Aneurinibacillus terranovensis* sp. nov., two novel thermoacidophiles isolated from geothermal soils of northern Victoria Land, Antarctica,” *International Journal of Systematic and Evolutionary Microbiology*, vol. 55, no. 3, pp. 1039–1050, 2005.
- [51] M. B. Stott, M. A. Crowe, B. W. Mountain et al., “Isolation of novel bacteria, including a candidate division, from geothermal soils in New Zealand,” *Environmental Microbiology*, vol. 10, no. 8, pp. 2030–2041, 2008.
- [52] M. Masomian, R. N. Abd Rahman, A. B. Salleh, and M. Basri, “A unique thermostable and organic solvent tolerant lipase from newly isolated *Aneurinibacillus thermoaerophilus* strain HZ: physical factor studies,” *World Journal of Microbiology and Biotechnology*, vol. 26, no. 9, pp. 1693–1701, 2010.
- [53] Y. R. Abdel-Fattah, “Optimization of thermostable lipase production from a thermophilic *Geobacillus* sp. using Box-Behnken experimental design,” *Biotechnology Letters*, vol. 24, no. 14, pp. 1217–1222, 2002.
- [54] S. Kumar, K. Kikon, A. Upadhyay, S. S. Kanwar, and R. Gupta, “Production, purification, and characterization of lipase from thermophilic and alkaliphilic *Bacillus coagulans* BTS-3,” *Protein Expression and Purification*, vol. 41, no. 1, pp. 38–44, 2005.
- [55] R. Kumar, S. Mahajan, A. Kumar, and D. Singh, “Identification of variables and value optimization for optimum lipase production by *Bacillus pumilus* RK31 using statistical methodology,” *New Biotechnology*, vol. 28, no. 1, pp. 65–71, 2011.

- [56] S. Ertuğrul, G. Dönmez, and S. Takaç, "Isolation of lipase producing *Bacillus* sp. from olive mill wastewater and improving its enzyme activity," *Journal of Hazardous Materials*, vol. 149, no. 3, pp. 720–724, 2007.
- [57] F. M. Shariff, T. C. Leow, A. D. Mukred, A. B. Salleh, M. Basri, and R. N. Abd Rahman, "Production of L2 lipase by *Bacillus* sp. strain L2: nutritional and physical factors," *Journal of Basic Microbiology*, vol. 47, no. 5, pp. 406–412, 2007.
- [58] A. Ebrahimpour, R. N. Abd Rahman, D. H. Ean Ch'ng, M. Basri, and A. B. Salleh, "A modeling study by response surface methodology and artificial neural network on culture parameters optimization for thermostable lipase production from a newly isolated thermophilic *Geobacillus* sp. strain ARM," *BMC Biotechnology*, vol. 8, p. 96, 2008.
- [59] M. Sifour, T. I. Zaghoul, H. M. Saeed, M. M. Berekaa, and Y. R. Abdel-fattah, "Enhanced production of lipase by the thermophilic *Geobacillus stearothermophilus* strain-5 using statistical experimental designs," *New Biotechnology*, vol. 27, no. 4, pp. 330–336, 2010.
- [60] C. Breuil, D. B. Shindler, J. S. Sijher, and D. J. Kushner, "Stimulation of lipase production during bacterial growth on alkanes," *Journal of Bacteriology*, vol. 133, no. 2, pp. 601–606, 1978.
- [61] S. Takaç and B. Marul, "Effects of lipidic carbon sources on the extracellular lipolytic activity of a newly isolated strain of *Bacillus subtilis*," *Journal of Industrial Microbiology and Biotechnology*, vol. 35, no. 9, pp. 1019–1025, 2008.
- [62] H. A. El-Shafei and L. A. Rezkallah, "Production, purification and characterization of *Bacillus* lipase," *Microbiological Research*, vol. 152, no. 2, pp. 199–208, 1997.
- [63] M. M. Berekaa, T. I. Zaghoul, Y. R. Abdel-Fattah, H. M. Saeed, and M. Sifour, "Production of a novel glycerol-inducible lipase from thermophilic *Geobacillus stearothermophilus* strain-5," *World Journal of Microbiology and Biotechnology*, vol. 25, no. 2, pp. 287–294, 2009.
- [64] N. G. Edwinoliver, K. Thirunavukarasu, R. B. Naidu, M. K. Gowthaman, T. N. Kambe, and N. R. Kamini, "Scale up of a novel tri-substrate fermentation for enhanced production of *Aspergillus niger* lipase for tallow hydrolysis," *Bioresource Technology*, vol. 101, no. 17, pp. 6791–6796, 2010.
- [65] J. G. S. Mala, N. G. Edwinoliver, N. R. Kamini, and R. Puvanakrishnan, "Mixed substrate solid state fermentation for production and extraction of lipase from *Aspergillus niger* MTCC 2594," *Journal of General and Applied Microbiology*, vol. 53, no. 4, pp. 247–253, 2007.
- [66] M. L. Rúa, C. Schmidt-Dannert, S. Wahl, A. Sprauer, and R. D. Schmid, "Thermoalkalophilic lipase of *Bacillus thermocatenulatus*: large-scale production, purification and properties: aggregation behaviour and its effect on activity," *Journal of Biotechnology*, vol. 56, no. 2, pp. 89–102, 1997.
- [67] S. Imamura and S. Kitaura, "Purification and characterization of a monoacylglycerol lipase from the moderately thermophilic *Bacillus* sp. H-257," *Journal of Biochemistry*, vol. 127, no. 3, pp. 419–425, 2000.
- [68] A. Ebrahimpour, R. N. Abd Rahman, M. Basri, and A. B. Salleh, "High level expression and characterization of a novel thermostable, organic solvent tolerant, 1,3-regioselective lipase from *Geobacillus* sp. strain ARM," *Bioresource Technology*, vol. 102, no. 13, pp. 6972–6981, 2011.
- [69] M. Tayyab, N. Rashid, and M. Akhtar, "Isolation and identification of lipase producing thermophilic *Geobacillus* sp. SBS-4S: cloning and characterization of the lipase," *Journal of Bioscience and Bioengineering*, vol. 111, no. 3, pp. 272–278, 2011.
- [70] T. C. Leow, R. N. Abd Rahman, M. Basri, and A. B. Salleh, "A thermoalkaliphilic lipase of *Geobacillus* sp. T1," *Extremophiles*, vol. 11, no. 3, pp. 527–535, 2007.
- [71] N. A. Soliman, M. Knoll, Y. R. Abdel-Fattah, R. D. Schmid, and S. Lange, "Molecular cloning and characterization of thermostable esterase and lipase from *Geobacillus thermoleovorans* YN isolated from desert soil in Egypt," *Process Biochemistry*, vol. 42, no. 7, pp. 1090–1100, 2007.
- [72] J. P. Henley and A. Sadana, "Categorization of enzyme deactivations using a series-type mechanism," *Enzyme and Microbial Technology*, vol. 7, no. 2, pp. 50–60, 1985.



Hindawi

Submit your manuscripts at
<http://www.hindawi.com>

